

SPHERO™ Magnetic Separators

Spherotech has several different designs of magnetic separators. These are used for separating both Paramagnetic and Ferromagnetic particles from a suspension. These designs accommodate different size tubes and other receptacles specific to various applications.

A combination of magnetic particles as solid phase and conventional enzyme immuno assay (EIA) microplate technology offers significant advantages over the conventional EIA. Some of the advantages are listed below:

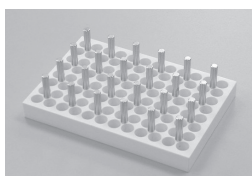
- Magnetic particles offer larger surface area and significantly faster reaction kinetics. As a result, the total time to complete an assay is reduced.
- Microparticles are washed more efficiently leaving less residual reactants, thus, lowering background signal and potentially improving sensitivity.
- Coating of magnetic particle is easier, gives a more uniform solid phase and helps to minimize lot-to-lot variation.

(A) The **SPHERO™ FlexiMag Separator** (Cat. No. FMS-1000) accommodates tubes ranging from 1.5 mL microfuge tube to 200 mL tissue culture bottle. It uses interchangeable tube holders to secure different size tubes and bottles. The separator comes with a set of three tube holders, Small, Medium and Large. Additional holders can be purchased separately, if needed.

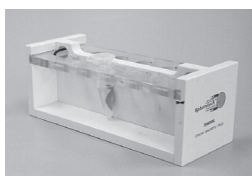
- a) The Small holder holds up to four 1.5 mL microfuge or four 10 or 12x75 mm test tubes (8 total).
- b) The Medium holder can hold two 15 mL centrifuge or two 16x100 mm tubes (4 total)
- c) The Large holder can hold two 50 mL centrifuge tubes (4 total).
- d) Two 200 mL tissue culture bottles directly without any tube holders.

The SPHERO™ FlexiMag Separator is ideal for any laboratory working with magnetic particles for cell separation, immunoassay or affinity purification. It offers the flexibility to meet the small scale requirements of a research laboratory and the large quantity processing of a commercial facility.

UltraMag DW Separator



FlexiMag Separator Jr.



Magnetic Separator	Catalog No.	Unit
FlexiMag Magnetic Separator, Jr.	FMJ-1000	each
FlexiMag Magnetic Separator	FMS-1000	each
Tube Holder Set for FlexiMag Separator	MSS-1100	set
MiniTube Magnetic Separator	MTMS-16	each
HandiMag Magnetic Separator	HMS-1000	each
MicroMag Magnetic Separator	MMS-2100	each
UltraMag DW Separator (For Deep Well Plates)	UMDS-1000	each
UltraMag Magnetic Separator	UMS-3000	each

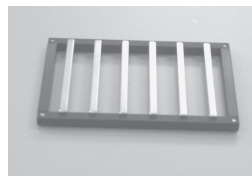
(B) The SPHERO™ FlexiMag Separator Jr. (Cat. No. FMJ-1000) is designed for small scale use. It holds up to eight 1.5 mL microfuge tubes, 5 mL cryovials, 10x75 mm or 12x75mm tubes.

(C) The SPHERO™ MicroMag Separator (Cat. No. MMS-2100) is designed to fit any 96-well plate with round bottom, flat bottom or V bottom. The magnet will pull the particles to the corner of the well bottom to facilitate the aspiration of supernatant during the washing.

(D) The SPHERO™ HandiMag Separator is a 1"x2"x0.375" Neodymium-Iron-Boron high strength magnet with nickel coating on the surface to prevent corrosion. The HandiMag can be used to separate the magnetic particles in various containers such as microfuge tubes, test tubes or centrifuge tubes by holding the magnet against the wall of containers by hand or with a rubber band.

(E) The SPHERO™ UltraMag Separator (Cat. No. UMS-3000) and SPHERO™ UltraMag DW Separator (Cat. No. UMDS-1000) are designed to facilitate the washing of magnetic particles in the Magnetic Particles Enzyme Immunoassay (MPEIA) using 96-well plates. The magnetic pegs of UltraMag Separator fit between the wells underneath the 96-well plate. The microplate is read in an appropriate microtiter plate reader by loading the microplate with the attached UltraMag Separator into the reader. The magnets ensure that the magnetic particles stay out of the light beam passing through the bottom of the well and corresponding holes in the UltraMag Separator.

MicroMag Separator



UltraMag Separator

